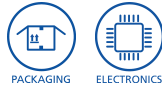
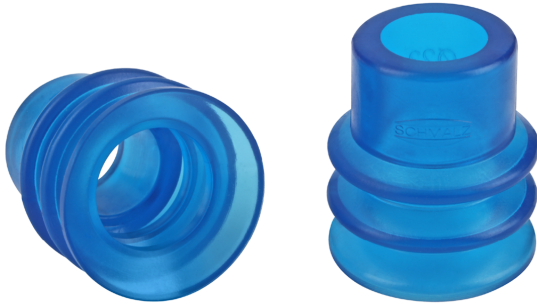


## Bellows Suction Cups FG PVC (2.5 Folds)

Suction area (Ø) from 18 mm to 50 mm



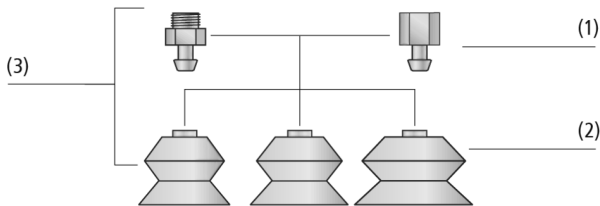
### Suitability for industry specific applications



#### Application

- Round bellows suction cup with 2.5 folds for handling of extremely fragile workpieces thanks to damping effect of folds and soft sealing lip
- Usage in box openers and for handling of non-rigid workpieces and soft packaging materials
- Handling tasks in special processes which use chlorinated water, such as rinsing of plastic bags

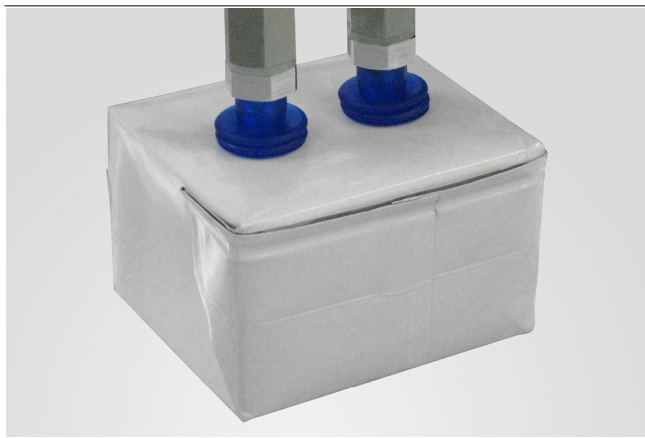
Bellows Suction Cups FG PVC (2.5 Folds)



#### Design

- Robust and wear-resistant suction cup FG (2) with 2.5 folds and single sealing lip
- Very adaptable geometry and soft, flexible material
- Large effective internal diameter
- With each nipple family, the replacement cups and nipples (1) can be combined as desired (3)

System design Bellows Suction Cups FG PVC (2.5 Folds)



Bellows suction cups FG PVC being used for handling small cardboard boxes

#### Product highlights

- 2.5 folds offer optimum damping effect when placed on workpieces
- Large effective diameter for high suction force
- Soft, flexible sealing lip adapts to curved surfaces and unevenness
- Resistant, FDA and BfR compliant PVC

## Bellows Suction Cups FG PVC (2.5 Folds)

Suction area (Ø) from 18 mm to 50 mm

### Designation code Bellows Suction Cups FG PVC (2.5 Folds)

<b>FG</b>	–	<b>32</b>	–	<b>PVC-50</b>	–	<b>N058</b>
1		2		3		4

#### 1 – Abbreviated designation

Code	Version
FG	2.5 folds

#### 2 – Suction area

Code	Diameter in mm
18...50	ø 18 to 50

#### 3 – Material

Code	Material
PVC-50	Polyvinylchloride

#### 4 – Connection

Code	Connection
N016	N016
N033	N033
N057	N057
N058	N058

Suction cup FG PVC (elastomer part + connection element) is delivered assembled. The assembly consists of:

- Suction cup of type FG PVC – elastomer part, available in various diameters
- Connection nipple of type SA-NIP – available with various threads

### Ordering data Bellows Suction Cups FG PVC (2.5 Folds)

Type*	Part no.
FG 18 PVC-50 N016	10.01.06.01941
FG 23 PVC-50 N057	10.01.06.01942
FG 32 PVC-50 N058	10.01.06.01943
FG 40 PVC-50 N033	10.01.06.02468
FG 50 PVC-50 N033	10.01.06.02469

\*Additional material specifications at beginning of the section "Vacuum Suction Cups"

### Ordering data Accessories Bellows Suction Cups FG PVC (2.5 Folds)

Type	Accessories	M5-AG	G1/8-AG	G1/8-IG	G1/4-AG	G1/4-IG
FG 18	Suction cup connection nipple	10.01.06.00123	10.01.06.05735	10.01.06.05731	-	-
FG 23	Suction cup connection nipple	-	10.01.06.03573	10.01.06.03574	-	-
FG 32	Suction cup connection nipple	-	10.01.06.02249	-	-	-
FG 40	Suction cup connection nipple	-	-	-	10.01.01.00818	10.01.01.00817
FG 50	Suction cup connection nipple	-	-	-	10.01.01.00818	10.01.01.00817

### Technical data Bellows Suction Cups FG PVC (2.5 Folds)

Type	Pull-off force [N]	Suction force (-600 mbar) [N]*	Volume [cm <sup>3</sup> ]	Workpiece radius min. (convex) [mm]	Hose inner diameter (recom.) d [mm]**	Nipple family
FG 18 PVC-50 N016	8	3.2	2.0	15	4	N 016
FG 23 PVC-50 N057	15	6.6	3.9	20	4	N 057
FG 32 PVC-50 N058	24	13.9	9.0	30	6	N 058
FG 40 PVC-50 N033	56	21.7	15.3	60	6	N 033
FG 50 PVC-50 N033	68	36.6	28.4	75	6	N 033

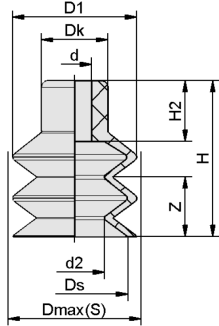
\*The specified suction forces are theoretical values at a vacuum of -0.6 bar and with a smooth, dry workpiece surface - they do not include a safety factor

\*\*The recommended hose diameter is based on a hose length of approx. 2 m

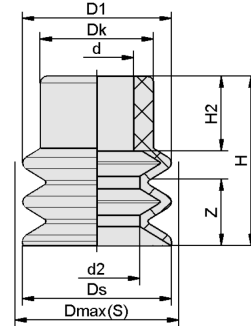
## Bellows Suction Cups FG PVC (2.5 Folds)

Suction area ( $\emptyset$ ) from 18 mm to 50 mm

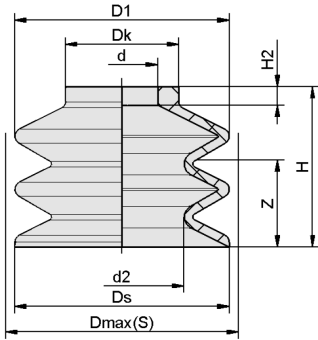
 Design data Bellows Suction Cups FG PVC (2.5 Folds)



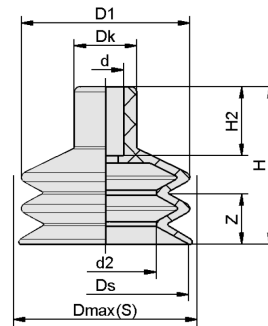
FG 18 PVC-50



FG 23 PVC-50



FG 32 PVC-50



FG 40, 50 PVC-50

## Bellows Suction Cups FG PVC (2.5 Folds)

Suction area (Ø) from 18 mm to 50 mm

### Design data Bellows Suction Cups FG PVC (2.5 Folds)

Type*	D1 [mm]	d [mm]	d2 [mm]	Dk [mm]	Dmax(S) [mm]**	Ds [mm]	H [mm]	H2 [mm]	Z (Stroke) [mm]
FG 18 PVC-50 N016	18.6	5.0	8.9	10	20.0	16.0	23.5	9.2	9
FG 23 PVC-50 N057	22.3	11.0	12.9	17	25.0	22.3	25.5	11.3	10
FG 32 PVC-50 N058	32.2	10.7	18.6	17	33.5	32.2	24.0	2.8	15
FG 40 PVC-50 N033	40.4	10.8	23.4	19	44.0	40.0	41.7	20.7	11
FG 50 PVC-50 N033	50.5	10.8	30.4	19	54.0	50.0	47.2	20.7	16

\*Acceptable dimensional tolerances for rubber parts concerning to DIN ISO 3302-1 E3

\*\*External dimension of the suction cup when it is pressed against the workpiece by the vacuum